

DEMS BULLETIN

FOR
DEMS
MEMBERS
ONLYDUKE ELLINGTON
MUSIC SOCIETY

1995/3

Oct-Dec

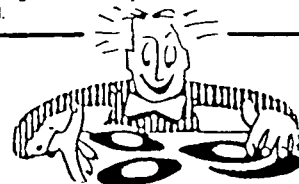
As a DEMS member you'll get access from time to time to unique Duke material. Please bear in mind that such material is to be handled with care and common sense. It must under no circumstances be used for commercial purposes. Anyone member being caught with having passed on such material for commercial purposes will result in cancelling his membership, his name published and information handed over to other societies similar to DEMS. As a DEMS member please help see to that this simple rule is followed. Thus we will be able to continue future special offers, such as tapes, AZURE-releases, etc., etc.

ALL FOR THE LOVE OF DUKE !

DEMS is a non-profit organization, depending on voluntarily offered assistance in time and material. Sponsors are welcomed.

NEW RELEASES ON COMPACT DISC THROUGH SEPTEMBER 1995

By Jerry Valburn



ASV LIVING ERA (E)

CD AJA 5147

BING CROSBY AND FRIENDS : 5- St. Louis Blues

CD AJA 5154

HITS OF '43 VARIOUS ARTISTS : 4- Don't Get Around Much Anymore (Never No Lament) 23- Perdido

ATTIC (CA)

(An MCA Company)

ACDM 1425

DUKE ELLINGTON NORTH OF THE BORDER

The Ron Collier Orchestra with Duke Ellington Soloist :

Aurora Borealis/Nameless Hour/Collage N° 3/Fair Wind/Silent Night, Lonely Night/Song And Dance/

Interview with DE by Ted O'Reilly with Ron Collier, Louis Applebaum and John Norris

AVID (E)

AVC 546

DUKE ELLINGTON UPTOWN DOWNBEAT : East St. Louis Toodle-oo/Washington Wobble/

Duga Duga Doo/I Can't Give You Anything But Love/Saratoga Swing/Accordion Joe/I've Got The World On A String/

Raisin' The Rent/Solitude/In A Sentimental Mood/Uptown Downbeat/In A Jam/Braggin' In Brass/Dinah's In A Jam/

Battle Of Swing/Ridong On A Blue Note/Smorgasbord & Schnapps/Harlem Air Shaft/Sepia Panorama/Ko-Ko/

Dusk/Conga Brava/Blue Goose/Never No Lament/Cotton Tail

BLUEBIRD (US)

66616-2

JOHNNY HODGES PASSION FLOWER 1940-1946 : Day Dream/Good Queen Bess -1-2/

That's The Blues/Old Man/Junior Hop/Squaty Roo/Passion Flower/Things Ain't What They Used To Be/Going Out The Back Way/

Never No Lament/Blue Goose/Warm Valley -1/After All/Giddybug Gallop/I Got It Bad -2/Clementine/Moon Mist -1/

Sentimental Lady/Come Sunday/Mood To Be Wooded/Rockabye River

BLUE NOTE (US)

CDP 2243 8 32862 2 5 BLUE NOTE BLEND (For Starbucks Coffee) : 8- Duke's Place

CDP 7243 8 32746 2 8 DUKE ELLINGTON 70TH BIRTHDAY CONCERT (2 CD SET) :(1) Rockin' In Rhythm/B.P./

Take The "A" Train/Tootie For Cootie/4:30 Blues/El Gato/Black Butterfly/Things Ain't What They Used To Be/Laying On Mellow/

(2) Satin Doll/Azure/In Triplicate/Perdido/Fifi/Medley: Prelude To A Kiss-I'm Just A Lucky So And So/I Let A Song Go Out Of My Heart-

Do Nothin' Till You Hear From Me-Just Squeeze Me-Don't Get Around Much Anymore-Mood Indigo-Sophisticated Lady-Caravan/

Black Swan/Final Ellington Speech COMMENT : Azure should be Azure-Te. Other underlines are mis-spellings.

CLASSICS (F)

805

THE CHRONOLOGICAL DUKE ELLINGTON & HIS ORCHESTRA 1940 : You, You Darlin'/

Jack The Bear/Ko-Ko/Morning Glory/So Far, So Good/Conga Brava/Concerto For Cootie/Me And You/Bojangles/Cotton Tail/Never No Lament/

Blue Goose/Harlem Air Shaft/At A Dixie Roadside Diner/All Too Soon/Rumpus In Richmond/My Greatest Mistake/Sepia Panorama

820 THE CHRONOLOGICAL DUKE ELLINGTON & HIS ORCHESTRA 1940 VOL. 2

There Shall Be No Night/In A Mellotone/The Five O'Clock Whistle/Warm Valley -1/Pitter Panther Patter/Body And Soul/Sophisticated Lady/

Mr. J.B.Blues/The Flaming Sword/Warm Valley/Across The Track Blues/I Never Felt This Way Before/Day Dream/The Good Queen Bess/

That's The Blues, Old Man/Junior Hop/Without A Song/My Sunday Gal/Mobile Bay (Blues)/Linger Awhile

837 THE CHRONOLOGICAL DUKE ELLINGTON & HIS ORCHESTRA 1940-1941 : Charlie The Chulo/

Lament For Javanette/A Lull At Dawn/Ready Eddy/Sidewalks Of New York/Flamingo/The Girl Of My Dreams/Take The "A" Train/

Jumpin' Punkins/John Hardy's Wife/Blue Serge/After All/Dear Old Southland/Solitude/Bakiff/Are You Sticking?/Just A-Settin' And A-Rockin'/

The Giddybug Gallop/Chocolate Shake/I Got It Bad/Clementine/The Brown Skin Gal In The Calico Gown/Jump For Joy

851 THE CHRONOLOGICAL DUKE ELLINGTON & HIS ORCHESTRA 1941 VOL. 2 :

Jump For Joy/Moon Over Cuba/Some Saturday/Subtle Slough/Menek (The Lion Of Judah)/Poor Bubber/Squaty Roo/Passion Flower/

Things Ain't What They Used To Be/Goin' Out The Back Way/Five O'Clock Drag/Rocks In My Bed/Bli-Blip/Chelsea Bridge/

Brown Suede/Noir Bleu/C-Blues/June/Raincheck/What Good Would It Do?/I Don't Know What Kind Of Bues I Got/Chelsea Bridge

(ctd. page 2)

COLUMBIA/LEGACY (US)

CK 57763 ESSENTIAL MUSIC BY THE MILLS BROTHERS, 4 BOYS & A GUITAR : 12- Diga Diga Doo
 CK 66372 BEST OF THE BIG BANDS DUKE ELLINGTON AND HIS GREAT VOCALISTS :

It Don't Mean A Thing/St. Louis Blues/I Can't Give You Anything But Love/Diga Diga Doo/I Must Have That Man/Solitude/
 Women'll Get You/Don't Get Around Much Anymore/Take Love Easy/On A Turquoise Cloud/Love You Madly/Take The "A" Train/
 Sophisticated Lady/Autumn Leaves/Love (My Everything)/Hello, Little Girl

CK 66911 THE BEST OF MAHALIA JACKSON : -16 (Black, Brown & Beige Pt. IV) The 23rd Psalm

COMPOSE (US) (Sony Music Special Products)

9126-2 70 OZ. OF BIG BAND ENTERTAINMENT :

5- I Let A Song Go Out Of My Heart 8- Prelude To A Kiss

DAICHI KIKAKU (J)

PB-1601/1603 JAZZ PIANO FAVORIETS COLLECTION (3 CD BOX) :

(1) 9- Solitude (2) 6- Take "A" Train

DA MUSIC (US)

CD 3705 JAZZ MASTERS VOLUME FOUR (5 CD BOX) :

(1) 1- Take The "A" Train (3) 3- Black And Tan Fantasy (4) 4- Flirtbird

DOHOSHA (J)

R-480407

JAZZ 11 ELLA FITZGERALD :

3- Drop Me Off In Harlem 4- I Got It Bad And That Ain't Good

DRIVE (SW)

CD DRIVE 3502

DUKE ELLINGTON & HIS ORCHESTRA SATIN DOLL : (= JAZZ CLUB/CD DRIVE (F) 3502)

EMPRESS (E)

RAJCD 842

DUKE ELLINGTON & HIS ORCHESRA SARATOGA SWING : Take The "A" Train/Perdido/

Five O'Clock Whistle/The Sidewalks Of New York/At A Dixie Roadside Diner/Sophisticated Lady/Harlem Air Shaft/Me And You/
 Concerto For Cootie/My Greatest Mistake/Johnny Come Lately/Sepia Panorama/Cotton Tail/Don't Get Around Much Anymore/
 Blue Goose/C-Jam Blues/Pitter Panther Patter/Raincheck/Hayfoot, Strawfoot/Moon Mist/Morning Glory/Saratoga Swing

EPIC (US) (Label also shows credits for Columbia/Legacy and Columbia Jazz Masterpieces)

EK 66972

HODGE PUDGE : Jeep's Blues/Rendezvous With Rhythm/Empty Ballroom Blues/Krum Elbow Blues/

I'm In Another World/odge Podge/Dancing On The Stars/Wanderlust/Dooji Wooji/Savoy Strut/Rent Party Blues/Good Gal Blues/
 Finesse/Hometown Blues/Dream Blues/Skunk Hollow Blues

GIANTS OF JAZZ (IT)

CD 53088

LOUIS ARMSTRONG 1929-1947 : 8- Long Long Journey

CD 53174

HARRY "SWEETS" EDISON : 9- Weary Blues 10- Royal Garden Blues

11- Wabash Blues 12- Basin Street Blues

HINDSIGHT (US)

HCD 258

GOTHAM BEAT BIG BANDS SWING NEW YORK : 1- Take The "A" Train

HCD 321

GREAT BIG BAND THEMES : 1- Take The "A" Train

HCD 323

GREAT JAZZ BANDS Count Basie-Duke Ellington-Andy Kirk-Jimmy Lunceford :

2- Someone 6- Suddenly It Jumped 9- Perdido 12- Jeep Is Jumpin'

HOLLYWOOD SOUNDSTAGE (US)

4007

S.T. REVEILL WITH BEVERLY/JAM SESSION : 4- Take The "A" Train

JAZZ ANTHOLOGY/EPM MUSIQUE (F)

152302

Les Anées Du Jazz Memorable Jazz Hi-Lites

JAZZ ANTHOLOGY 1943/44 (2 CD SET) :

(1) 13- The Work Song 14- I'm Beginning To See The Light

JAZZ BAND (E) (Produced by Flyright Records)

EBCD 2123-2

THE DORSEY BROTHERS ORCHESTRA 1 & 8 January 1955 TV's STAGE SHOW :

(ELLINGTON MEDLEY PORTION = MAGIC (E) DAWE 37)

JAZZ PORTRAITS (E)

CD 14564

DUKE ELLINGTON 20TH DEATH ANNIVERSARY : Kinda Dukish-Rockin' In Rhythm/Silk Lace/

Asphalt Jungle Twist/Guitar Amour/Afro Bossa/Eighth Veil/Happy Reunion/Jam With Sam/Harlem/Take The "A" Train

JAZZ TIME (POR)

JPM 8129

BEST OF THE BIG BANDS - BIG BANDS : 3- Take The "A" Train

JAZZ UNLIMITED (D)

JUCD 2050

MISCELLANEOUS MILES DAVIS 1955-1957 :

1- Introduction By Duke Ellington (NJF Concert 17Jul55)

K-TEL INTERNATIONAL (US)

K-TBL 3335-2

JAZZ JUMPS IN SWING THIS :

1- East St. Louis Toodle-oo 8- Concerto For Cootie

LEGENDS OF JAZZ (US) (Eclipse Music Group, Inc.)

64058-2

DUKE ELLINGTON SATIN DOLL :

(= JAZZ TIME (US) 6107)

MCA-IMPULSE (US) (Following item is a sampler and not for sale)

IMP 2P-8881

ACT ON IMPULSE ! : 11- Limbo Jazz

(ctd. page 3)

MOON (SP)

MCD068-2

CARNEGIE HALL '67, VOLUME TWO DUKE ELLINGTON & HIS ORCHESTRA :

(= JAZZ UP JU 323)

MOSAIC RECORDS (US)

MD5-160

THE COMPLETE CAPITOL RECORDINGS OF DUKE ELLINGTON (5 CD BOX) : (1)

(6Apr53-HWD) Satin Doll-11398-1/Without A Song-11399-4/Cocktails For Two-11400-2(7Apr53-HWD) My Old Flame-11414-3/
 I Can't Give You Anything But Love-11415-3/Ain't Nothin' Nothin' Baby (Witout You)-11416-3/Stormy Weather-11417-5/
 Star Dust-11418-8/Three Little Words-11419-6/Orson-11420-5 (9Apr53-HWD) Boo-Dah-11421-6/Blossom-11422-6/
 Ballin' The Blues-11423-2/Warm Valley-11424-5/Flamingo-11406-9/Bluejean Beguine-11407-8/Liza-11408-10
 (13Apr53-HWD) Who Knows? (11431-6/Retrospection-11432-1/B-Sharp Blues-11433-1/Passion Flower-11434-3/
 Dancers In Love-11435-2/Reflections In D-11436-1 (2) Melancholia-11437-4/Prelude To A Kiss-11438-2
 (14Apr53-HWD) In A Sentimental Mood-11439-2/Things Ain't What They Used To Be-11440-5/
 All Too Soon-11441-3/Janet-11442-2 (30Jun53-CHI) Give Me The Right-11620-4/Is It A Sin? (My Loving You)-11621-3/
 Don't Touch Me-11622-6/Basin Street Blues-11623-4 (1Jul53-CHI) Big Drag-11624-8/Hear My Plea-11625-10/
 Don't Ever Say Goodbye-11626-3/What More Can I Say-11627-1 (3Dec53-NYC) Kinda Dukish-20246-9/Montivideo-20247-11/
 December Blue-20248-6/I'm Just A-Lucky-So And So-20249-2/It Shouldn't Happen To A Dream-20250-7
 (5Dec53-NYC) What More Can I Say?-20263-7/Rockin' In Rhythm-20264-2/Ultra Deluxe-20265-1/Flying Home-20266-3
 (15Dec53-NYC) Chile Bowl-20275-7/Blue Moon-20276-6/Oh Well-20277-1/Just A-Settin' And A-Rockin'-20278-2
 (21Dec53-NYC) Ultra Deluxe-20287-5 (3) Flying Home-20288-5/What More Can I Say?-20289-8/
 Serious Serenade-20290-6/Just A-Sittin' And A-Rockin'-20291-5/Honeysuckle Rose-20292-7
 (28Dec53-CHI) Night Time-12247-10/Stompin' At The Savoy-12248-6 (29Dec53-CHI)
 Don't Ever Say Goodbye-12249-13/Black And Tan Fantasy-12250-2 (1Jan54-CHI) Frivolous Banta-12251-12/
 In The Mood-12252-1 (2Jan54-CHI) One O'Clock Jump-12253-4 (4) Things Ain't What They Used To Be-12254-3
 (17Jan54-CHI) Happy-Go-Lucky Local-12309-4/Rockin' In Rhythm-12310-2/Falling Like A Raindrop-12311-12
 (26Apr54-SF) All Day Long-12579-4/Bunny Hop Mambo-12580-12/Isle Of Capri-12583-9/C-Jam Blues-12584-1/
 Band Call-12585-4 ((17Jun54-NYC)Gonna Tan Your Hide-20402-1/It Don't Mean A Thing-20403-4
 (3Sep54-HWD) Smile-12992-10/Echo Tango-12993-13/If I Give My Heart To You-12994-10/Chile Bowl-12995-6/
 Bakiff-12996-3 (5) (8Oct54-CHI) Twelfth Street Rag Mambo-13090-4/September Song-13091-2/Caravan-13092-1
 (17May55-CHI) La Virgen De La Macarena-14094-1/Harlem Air Shaft-14095-2/Halem Air Shaft-14095-5/
 Look What I've Got For You-14096-4/Commercial Time-14097-1 (18May55-CHI) Clarinet Melodrama-14098-5/
 Theme For Trambean-14099-4/Coquette-14100-4/Serious Serenade-14101-1/Body And Soul-14304-2
 (19May55-CHI) Discontented Blues-14102-7/Once In A Blue Mood-14103-10/
 Oh, Lady Be Good-14104-7/So Long-14105-9

MUSIC SALES CORP. (US) (not for sale or broadcast) (only DE tracks noted here)

UN-NUMBERED

MUSIC PUBLISHING HIGHLIGHTS THE MUSIC OF ELLINGTON & STRAYHORN :

1- Boo-Dah 3- Come Sunday 5- Johnny Come Lately 7- My Little Brown Book 9- Perdido 12- A slip Of The Lip
 13- Things Ain't What They Used To Be/The Work Song (Black, Brown & Beige)

PARADE (E)

PAR 2036

A GENEROSITY OF MOOD DUKE ELLINGTON : Mood Indigo/It Don't Mean A Thing/
 East St. Louis Toodle-oo/Black And Tan Fantasy/Rockin' In Rhythm/The Mooche/Solitude/Caravan/Wall Street Walk/
 When You're Smiling/Cotton Club Stomp/Runnin' Wild/Wang Wang Blues/Twelfth Street Rag/
 Creole Rhapsody, Pts 1-2/Is That Religion?/Hot And Bothered/Old Man Blues/Ring Dem BellsPAST PERFECT (E) (Submarine Records)

PPCD 78100

THE PAST PERFECT SAMPLER CD AN INTRODUCTION TO THEIR FIRST 15 ALBUMS :

3- I Let A Song Go Out Of My Heart

PPCD 78101

THE GREAT AMERICAN DANCE BANDS : 8- Take The "A" Train

PPCD 78103

DUKE ELLINGTON & HIS ORCHESTRA BLUE FEELING : Black And Tan Fantasie/Creole Love Call/
 Harlem Twist/Black Beauty/Swampy River/Cotton Club Stomp/Shout 'Em Aunt Tillie/Ring Dem Bells/Echoes Of The Jungle/Blue Harlem/
 Drop Me Off At Harlem/Bundle Of Blues/Harlem Speaks/Hyde Park/Blue Feeling/Merry-Go-Round/Clarinet Lament/I'm Slappin' 7th Ave./
 Riding On A Blue Note/I Let A Song Go Out Of My Heart/Blue Light/Ko-Ko/Jack The Bear

PPCD 78104

DANCE CRAZY! FROM THE CHARLESTON TO THE JIVE : 8- Rockin' In Rhythm

PPCD 78107

THE GREAT JAZZ PIANISTS : 9- Swampy River

PHANTASTIC (SD)

CD 7672

1944 - I'M BEGINNING TO SEE THE LIGHT : 10- I'm Beginning To See The Light

CD 7673

1945 - IT'S BEEN A LONG LONG TIME : 3- Time's A-Wastin'

RADIO DAYS (US) (Canby Records - A Division of Quicksilver)

CACD-1010

"LIVE" DUKE ELLINGTON ORCHESTRA BLUE NOTE NEW YORK CITY AUGUST 6, 1952 :

The Eighth Veil/How High The Moon/Solitude/Take The "A" Train/Caravan/I Let A Song Go Out Of My Heart/Don't Get Around.....

RCA (F)

74321221062

DUKE ELLINGTON EASTBOURNE PERFORMANCE : The Piano Player/Creole Love Call/
 Don't You Know I Care?/I Can't Get Started/New York,New York/Pitter Panther Patter/How High The Moon/Basin Street Blues/
 Tiger Rag/Woods/Meditation

7432115524-2

THE INDISPENSABLE ELLINGTON, VOLS 10/11 (= RCA (F) (LP) NL 89972 (2))

(ctd. page 4)

ND 89274 THE INDISPENSABLE ELLINGTON VOLS 7/8 : (= RCA (F) (LP) NL 89274 (2))
 ND 89750 THE INDISPENSABLE ELLINGTON VOLS 5/6 : (= RCA (F) (LP) NLPM 45352)

RCA (US)

51364-2 IN A MELLOTONE : Take The "A" Train/A Portrait Of Bert Williams/Main Stem/Just A-Settin' And A-Rockin',
 I Got It Bad/Perdido/Blue Serge/The Flaming Sword/In A Mellotone/Cotton Tail/I Don't Know What Kind Of Blues I Got/
 Rumpus In Richmond/All Too Soon/Sepia Panorama/Rocks In My Bed/What Am I Here For?

RCA-VICTOR (US)

68124-2 CLEO LANE SOLITUDE : 9- Solitude (using DE's piano solo, 14 May 41, Cleo Lane's voice is overdubbed)

SONY MUSIC SPECIAL PRODUCTS (US) (Sony Music Entertainment, Inc.) (*refers to Pgs N^o not track)

A 21728* JAZZ CLASSICS FOR JAZZ STYLES (Prentice-Hall) : 14- Cotton Tail 20- Harlem Air Shaft

26- Transblucency 32- Prelude To A Kiss

A 2396* COMPACT DISC FOR CONCISE GUIDE TO JAZZ (prentice-Hall) :

25- Harlem Air Shaft 32- I Got It Bad

STATUS (E)

DSTS 1013

DUKE ELLINGTON & ELLA FITZGERALD LIVE AT THE CREEK THEATRE LOS ANGELES :

Take The "A" Train (Theme)/Take The "A" Train/Soul Call/In A Sentimental Mood/Prowling Cat/La Plus Belle Africaine/

Old Circus Blues/Sweet Georgia Brown/Stardust/So Danco Samba/How Long Has This Been Going On/St. Louis Blues/

Misty/Mack The Knife/Tap Routine/Cotton Gail/Things Ain't What They Used To Be

TIMELESS TREASURES (US) (Courtesy of Teichiku Records, Japan)

CD-104 BIG BANDS OF THE SWINGING YEARS : 10- Ain't Misbehavin'

TIME-LIFE MUSIC (US)

R912-14 HIT PARADE OF 1944 : 23- Do Nothin' Till You Hear From Me

R912-16 HIT PARADE OF 1941 : 1- Take The "A" Train 18- I Got It Bad

R960-07 BIG BAND ERA DUKE ELLINGTON : Rockin' In Rhythm/Mood Indigo/Hot Feet/

Echoes Of The Jungle/Cotton Club Stomp/Double Check Stomp/Solitude/Rude Interlude/Stompy Jones/My Old Flame/

Take The "A" Train/In A Sentimental Mood/The Brown Skin Gal/Caravan/Jump For Joy/I'm Beginning To See The Light/

Flamingo/Sophisticated Lady/Rocks In My Bed/It Don't Mean A Thing/Time's A-Wastin'

TOPAZ RECORDS (E) (Pavillion Records)

TPZ 1014 BEN WESTER EVOLUTION : 10- Stormy Weather 11- Conga Brava 12- Bojangles 13- Cotton Tail

14- All Too Soon 15- Sepia Panorama 16- Sidewalks Of New York 17- Just A-Settin' And A-Rockin' 18- Poor Bubber

19- Perdido 20- C-Jam Blues

TPZ 1020 THE DUKE PLAYS ELLINGTON, VOL. ONE : East St. Louis Toodle-Oo/Black And Tan Fantasy/

Creole Love Call/Take It Easy/Hot And Bothered/The Mooche/Awful Sad/Mood Indigo/Rockin' In Rhythm/Creole Rhapsody, Pts 1-2/

Sophisticated Lady/Solitude/In A Sentimental Mood//Caravan/Azure/Diminuendo & Crescendo In Blue/I Let A Song Go Out Of My Heart/

Pyramid

VIPER NEST (US)

163 BIG BAND JUMP THE GREAT SWING BAND ANTHOLOGY : 1- Rain Check

WARNER WESTERN (US) (Warner Bros. Records, Inc.) (Following item is a sampler, not for sale)

PRO CD-7621 A BRIEF HISTORY OF HERB JEFFRIES "THE BRONZE BUCKAROO" :

5- You, You Darlin' 6- Flamingo 7- I Don't Know What Kind Of Blues I Got 8- Jump For Joy

Continuing Ken Rattenbury's series

THE ELLINGTON SOLOISTS



(55) Johnny Hodges: WEARY BLUES

Following from our previous Bulletin, Johnny Hodges' solo on 'Basin Street Blues', here is yet another performance, this time constructed over a piece which employs the classic 12-bar blues sequence of harmonies, a format within which our soloist operates with sensitivity, profound emotion and blithe invention. Hodges and the blues - - a blissful partnership.

'Weary Blues' was composed in 1915 by one Art Matthews, whose simple 12-bar melody barely departs from the basic harmonies of this essential-to-jazz style. Yes, a pleasing, uncomplicated tune, here transformed into an example of simple, direct blues rhetoric of uncommon quality, and possibly the most startling quirk of blues construction, a most attractive deployment of pre dissonance, is the occasion when the set classic harmonies persist as major tonalities, whereas the soloist may often consciously express his thoughts in the minor, setting up a definitive major/minor ambivalence within the routine. More often than not, Hodges works this faintly bizarre but attractive trick into his solos, showing a distinct predilection for this somewhat pungent ploy. And there it shows in his emphasis on the minor 3rd degree of the home scale (E-flat) against the straight D-flat major harmony, in Bars 1 and 2 (dissonant blue notes, marked * on score). Wherever the blue note does not clash with the underlying harmony, it is classed as a consonant blue note, and is marked φ on the score. Also worthy of note is his return in Bars 5 and 6, to the phrasing and dissonances he played over Bars 1 and 2. The only significant departure from the classic, un-decorated blues sequence appears in Bars 9 and 10 where the dominant eleventh chord is detailed - - but this is not a radical variation. Watch for the close similarities in melodic development in Bars 3 and 7. Looked at piecemeal, the complete stanza presents a carefully constructed, well disciplined logically rounded and complete new strain, a fine example of the relaxed, spacious instant composition for which Johnny Hodges was so justly revered.

MM ♩ = 120

HODGES

HARMONY

1 2 3

4 5 6

7 8 9

10 11 12

Db

Db7

Ab7

Ab11

Db

Ab7

Ab11

Db

LIP DOWN

7 LIP DOWN

KEY: * DISSONANT 'BLUE NOTES'. φ CONSONANT 'BLUE NOTES'. Rattenbury '95

SOURCE Issued as 'Back To Back : Duke Ellington and Johnny Hodges Play the Blues', Recorded in New York on 20 February 1959. Duke Ellington (piano), Johnny Hodges (alto saxophone), Harry Edison (trumpet), Leslie Spann (guitar), Al Hall (bass) and Jo Jones (drums). Rattenbury

NEW DISCOVERIES:**DUKE ELLINGTON and HIS ORCHESTRA:**

Bill Berry, Ray Nance, Roy Burrowes, Cat Anderson(tp) Lawrence Brown, Chuck Connors Leon Cox(tb)
 Jimmy Hamilton(cl,ts) Russell Procope(cl,as) Johnny Hodges(as) Paul Gonsalves(ts) Harry Carney(bars)
 Duke Ellington(p) Aaron Bell(b) Sam Woodyard(dms) National Symphony Orchestra, conducted by
 Gunther Schuller

Constitution Hall, Washington, D.C., May 31, 1962

NIGHT CREATURE

Blind Bug
 Stalking Monster
 Dazzling Creature

NOTE: The concert was given under the heading "Symphonic Jazz".
 After "Night Creature" was played "Improvisation" by L. Austin, conducted by Howard Mitchell.
 Recording made for the Voice of America at the First International Jazz Festival

DUKE ELLINGTON and HIS ORCHESTRA:

Bill Berry, Ray Nance, Roy Burrowes, Cat Anderson(tp) Lawrence Brown, Chuck Connors Leon Cox(tb)
 Jimmy Hamilton(cl,ts) Russell Procope(cl,as) Johnny Hodges(as) Paul Gonsalves(ts) Harry Carney(bars)
 Duke Ellington, Billy Strayhorn(p) Aaron Bell(b) Sam Woodyard(dms) Milt Grayson, Ray Nance, vocals.

Guest announcer: Mercer Ellington.

Coliseum, Washington D.C., June 2, 1962

Introduction by Willis Conover
 Take The "A" Train
 Kinda Dukish & Rockin' In Rhythm
 Passion Flower
 Things Ain't What They Used To Be
 V.I.P.'s Boogie (NA)
 Jam With Sam
 Just Squeeze Me(rn)
 Diminuendo And Crescendo In Blue
 Take The "A" Train
 Do Nothin' Till You Hear From Me
 Why Was I Born? (mg)
 One More Once & encore(mg)
 Jones (theme)

NOTE: Recording made for the Voice of America at the First International Jazz Festival.
 NA = Not available. Announced but deleted from the recording.
 Duke played at Howard University, Cramton Hall Coliseum with his trio at 3.00 PM. (see Jazz
 Records. vol 6) and at the First International Jazz Festival at the Coliseum on June 2. at 8.00
 PM. The tapebox stored in the Danish Jazz Center has the correct date.

Same personnel, guest "conductor": Mercer Ellington.

Coliseum, Washington D.C., June 3, 1962

Take The "A" Train
 Perdido
 Congo Square
 The Feeling Of Jazz(mg)
 The Blues(mg)
 One More Once(mg)
 I Got It Bad
 Guitar Amour
 Jam With Sam
 Take The "A" Train

NOTE: Recording made for the Voice of America at the First International Jazz Festival



Duke Ellington introduces some of the tunes from his new Cap album, "Ellington '55," to the audience at recent Gene Norman jazz concert.

THE COMPLETE CAPITOL RECORDINGS

(Continued from part one in previous bulletin)

Benny Aasland has gone through the material from the Capitol ledgers and added additions and corrections from his contemporary notes and other things.

(In previous bulletin an editing error occurred, the 13Apr-30Jun53 were listed twice)



1 Jan 54 Chicago
CT CA WC RN QJ BWmn GeorgeJean RP
RHsn PG JHtn HC DE WMsl DBlk
12251-12 **FRIVOLOUS BANTA** T637
12252 **IN THE MOOD** W521

2 Jan 54 Chicago, same personnel as last
12253-1 **ONE O'CLOCK JUMP** W521
12254-(?) **THINGS AIN'T WHAT ...** T637

17 Jan 54 Chicago, same personnel as last
12309-4 **HAPPY GO LUCKY LOCAL** W521
12310-2 **ROCKIN' IN RHYTHM** *) W521 T1602
12311-12 **FALLING LIKE A RAIN DROP** (add p BS) T679

*) Some discos claim different issued takes on later Capitol LPs. But all issued takes are identical.

26 Apr 54 San Francisco
CT CA WC RN QJ BWmn JSrs RP RHsn
PG JHtn HC DE WMsl DBck vJGsm
12579-4 **ALL DAY LONG** 3049
12580-12 **BUNNY HOP MAMBO** a) 2875
12583-9 **ISLE OF CAPRI** a) b) 2817
12584-4 **C-JAM BLUES** T637
12585-4 **BAND CALL** 2817

a) add Gerald Wilson (tp)
b) add Ralph Collier (conga)

17 Jun 54 NYC, same personnel as last
20402-1 **GONNA TAN YOUR HIDE** T679
29403-4 **IT DON'T MEAN A THING** vRN C2-28106
Pickwick 3390 +) Up-To-Date 2006 ++)
+) edited down to about half its length on Pickwick.
++) unedited and complete version on Up-To-Date (see DEMS83/4-3).

1 Sep 54 Los Angeles, same personnel as last
12992-10 **SMILE** a) 2930
12993-13 **ECHO TANGO** a) 3049
12994-10 **IF I GIVE MY HEART TO YOU** a) 2930
12995-6 **CHILI BOWL** *) 2980
12996-3 **BAKIFF** a) b) T673 T1602

a) add Gerald Wilson (tp)
b) add Ralph Collier (conga)
a) "ECHO TANGO" was issued with its original title **TYROLEAN TANGO** on Capitol(US) 3049.
*) Titled "Chile Bowl" in Capitol ledgers.

8 Oct 54 Chicago, same personnel as last except Oscar Pettiford replaces WMsl
13090-4 **TWELFTH STREET RAG MAMBO** c) 2980
13091-2 **SEPTEMBER SONG** vJGsm Pickwick 3390
13092-1 **CARAVAN** c) T637 T1602
c) add Frank Rollo (conga).

17 May 55 Chicago, same as 7 Sep 54 except JWde replaces WMsl
14094-1 **LA VIRGEN DE LA MACARENA** a) T679 #)
14095-2 **HARLEM AIR SHAFT** unissued
14095-5 **HARLEM AIR SHAFT** T679
14096-4 **LOOK WHAT I GOT FOR YOU** §) vJGsm
Up-To-Date 2009

14097-1 **COMMERCIAL TIME** Up-To-Date 2009
a) add Gerald Wilson, who also made this arrangement.
#) The issued version was edited down to 2:27.
§) Arranged by Rick Henderson. Titled **BLUES** on Up-To-Date.

18 May 55 Chicago, same personnel as last
14098-5 **CLARINET MELODRAMA** T679
14099-4 **THEME FOR TRAMBEAN** T679
14100-4 **COQUETTE** vJGsm d) Pickwick 3390
14101-1 **SERIOUS SERENADE** T679
d) DE plays electric piano:

tpRN QJ clRP tsPG DE JWde DBck:
14304-2 **BODY AND SOUL** Up-To-Date 2009

19 May 55 Chicago
tpRN cl/asRP QJ DE(elec piano) JWde DBck
14102-7 **DISCONTENTED BLUES** unissued
14103-10 **ONCE IN A BLUE MOOD** °°) Up-To-Date 2009
14104-7 **LADY BE GOOD** vJGsm Pickwick 3390
14105-9 **SO LONG** **) vJGsm Up-To-Date 2009
°°) Titled "Once In A Blue" on Up-To-Date.
**) "So Long" is a variation/extension of "Blue Moon".

Note- The Capitol open reel 4-track biasonic (stereo) tape Y2T 2229, "The Best Of Duke Ellington" (WarmValley/Rockin' In Rhythm/Prelude To A Kiss/Satin Doll/Caravan/Flamingo/In A Sentimental Mood/Black And Tan Fantasy/Passion Flower/Bakiff) presented a very good sound. I cannot remember if the equivalent LP album T 1602 had the same new biasonic sound.

DANCE TO THE DUKE!

Duke Ellington and His Famous Orchestra

C-Jam Blues • Frivolous Banta • Night Time • Caravan • Things

Ain't What They Used To Be • Orson • Kinda Duktish • Bakiff



Album No. 637

Young dancers are discovering what jazz enthusiasts have long known — the irresistible appeal of music by the Duke. This album is solid evidence that the Ellington touch is more distinctive than ever.



NEW RELEASES

AND RE-RELEASES



Charley (EEC) CD DIG 13 (4 CDs)
"THE ESSENTIAL DUKE ELLINGTON"

Disc One: "ROCKIN' IN RHYTHM":

29Dec26 Immigration Blues/3Feb27 New Orleans LowDown/14Mar27 East S. Louis Toodle-Oo/7Apr27 Black And Tan Fantasy (a)/1Oct28 Hot And Bothered/The Mooche/17Oct28 Louisiana/20Nov28 The Blues With A Feelin'/22Nov28 Misty Morning/8Jan29 Doin' The Voom Voom /1Mar29 Rent Party Blues/Harlem Flat Blues/29Jul29 Jungle Jamboree/10Dec29 Sweet Mama/22Apr30 Double Check Stomp/Cotton Club Stomp (b)/20Aug30 Ring Dem Bells/17Oct30 Mood Indigo/30Oct30 Sweet Chariot/8Jan31(c) Rockin' In Rhythm/20Jan31 Creole Rhapsody, Pts 1 & 2

Disc Two: "REMINISCING IN TEMPO":

2Feb32 It Don't Mean A Thing/11Feb32 St. Louis Blues/Creole Love Call/18May32 Slippery Horn/19Sep32 Slippery Horn/21Sep32 Lightnin'/15Feb33 Sophisticated Lady/17Feb33 Drop Me Off In Harlem (d) /9May33 Bundle Of Blues (Dragon's Blues)/15Aug33 Harlem Speaks/4Dec33 Daybreak Express/9Jan34 Delta Serenade (e)/Stompy Jones/12Sep34 Solitude/Saddest Tale/Moonglow/30Apr35 In A Sentimental Mood/Showboat Shuffle/17Sep35(f) Reminiscing In Tempo (Pts 1, 2, 3, 4)

Disc Three: "KO-KO":

27Feb36 Clarinet Lament (Barney's Concerto)/Echoes Of Harlem (Cootie's Concerto)/17Jul36 Trumpet In Spades (Rex's Concerto)/ Yearning For Love (Lawrence's Concerto)/(It Was A) Sad Night In Harlem/14May37 (date not mentioned) Caravan/Azure/20Sep37 (date not mentioned) Diminuendo In Blue/Crescendo In Blue/Harmony In Harlem/13Jan38 Steppin' Into Swing Society/2Feb38 Lost In Meditation/3Mar38 I Let A Song Go Out Of My Heart/9Aug38 Prelude To A Kiss/Sep38(g) Battle Of Swing (Le Jazz Hot)/2Dec38(h) Blue Light/Slap Happy/20Mar39 Subtle Lament/6Jun39 Serenade To Sweden/28Aug39 The Sergeant Was Shy/6Mar40 Jack The Bear/Ko-Ko

Disc Four: "Main Stem":

6Mar40 Morning Glory/15Mar40 Conga Brava/Concerto For Cootie/4May40 Cotton Tail/Never No Lament/28May40 Dusk/Bojangles (A Portrait Of Bill Robinson)/A Portrait Of Bert Williams/22Jul40 All Too Soon/24Jul40 Sepia Panorama/5Sep40 In A Mellotone/17Oct40 Warm Valley/15Feb41 Take The A Train/John Hardy's Wife/Blue Serge/5Jun41 Just A-Settin' And A-Rockin'/2Jul41 Jump For Joy (i)/2Dec41 Chelsea Bridge (j)/Raincheck (j)/21Jan42 Perdido/The C Jam Blues (k)/Moon Mist (l)/26Jun42 Main Stem (m)

The Four Disc Set includes 86 recordings enclosed and, in a handsome way packed in book form, and with an illustrated 48 pages book included.

- (a) The Okeh label shown to illustrate here is however from the 3Nov27 session (take -C).
- (b) Delete the title "Wall Street Wall" mentioned within brackets.
- (c) Latest research efforts say the date to be 6Jan31 (!).
- (d) Correct title should read "Drop Me Off At Harlem".
- (e) Originally titled "Oh Babe".
- (f) Correct date is 12Sep35.
- (g) Correct date is 19Dec38.
- (h) Correct date is 22Dec38.
- (i) This is take -2 with HJ as vocalist (take -1 has IA as vocalist).
- (j) For those interested in the order of recordings: "Raincheck" opened the session, "Chelsea Bridge", a rerecording, closed it.
- (k) Originally titled "Jump Blues".
- (l) - - "Atmosphere".
- (m) - - "Swing Shifters Swing".

Aasland



Blue Moon (Sp) BMCD 3019 (CD)
"THE BEST OF THE FORTIES - VOL.1 1940-1942"

6Mar40 Jack The Bear/Ko-Ko/15Mar40 Concerto For Cootie/Cotton Tail/Never No Lament/28Mar40 Bojangles/A Portrait Of Bert Williams/Blue Goose/22Jul40 Harlem Air Shaft/All Too Soon/24Jul40 Sepia Panorama/5Sep40 In A Mellotone/17Oct40 Warm Valley/28Oct40 Across The Track Blues/28Dec40 The Sidewalks Of New York/15Feb41 Take The A Train/John Hardys Wife/5Jun41 Just A-Settin' And A-Rockin'/2Dec41 Chelsea Bridge/21Jan42 Perdido/C Jam Blues/26Feb42 What Am I Here For?/26Jun42 Main Stem/Johnny Come Lately/28Jul42 Sentimental Lady

The label name is not to be found on the CD itself, but mentioned on the cover and the 12 pages booklet.

Aasland

(in)

Compton's New Media no number (CD-ROM)
"JAZZ: A MULTIMEDIA HISTORY"

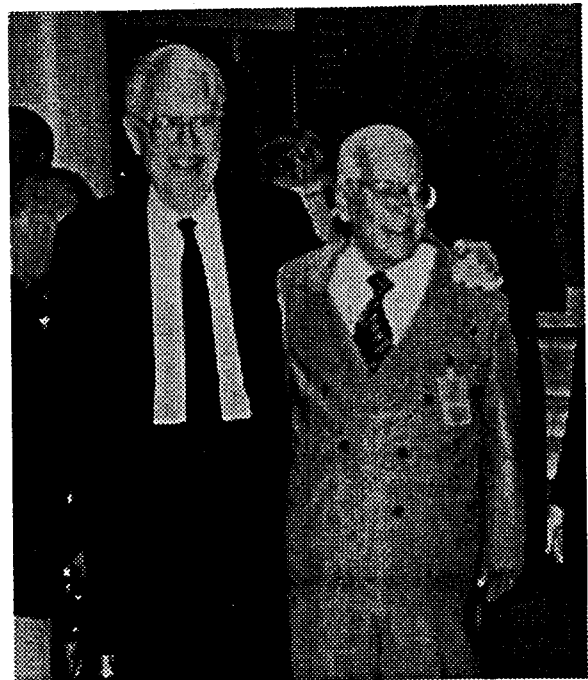
This CD gives you a complete chronology of jazz music and its masters with text, photos, films and selected recordings from 1923-1991. You can read quotes and interviews from jazz musicians that will give you interesting insights into what the jazz scene is all about. Minimum system requirements: Macintosh or Performa with 4 MB RAM, color monitor, CD-ROM drive, System 7.0.1. or later, QuickTime 1.5 (included with this CD). You can direct yourself to any part of the CD contents. This new media contains much much more information than an ordinary CD.

The DE detailed portion has, as generally throughout this content, photos, Music (scores and examples) in sound, Photos, etc., and you will have access to a library and a discographical pool.

A 14Mar52 Snader Telescription portion is included, showing WS & DE in "Sophisticated Lady".

This is one of the indications telling ordinary CDs will be "old" in a near future. Compare with the good-bye to LPs replaced by CDs.

Aasland



Gordon Ewing and Benny Aasland
 In Stockholm, May 1994.